



League of Women Voters of Corvallis

Serving Linn and Benton Counties

May 2008

LWV of CORVALLIS ANNUAL MEETING

Wednesday, May 21st, 6:00 – 9:00 pm

Public Library Meeting Room

645 NW Monroe Avenue

Co-sponsored by the Corvallis-Benton County Public Library



Dinner Buffet 6:00 – 7:00 PM *

Business Meeting 7:00 – 7:45 PM

Featured Speaker 7:45 – 8:45 PM

Jeanette Hardison

Administrative & Marketing Director

Get SMART! Resource Efficiency Program, Corvallis Environmental Center

"How Local Businesses Are Meeting the Energy Challenge"

Join with your fellow League members for a delicious dinner, a lively business meeting, and an informative and timely presentation.

Our speaker, Jeanette Hardison, has an extensive background in the recycling and waste prevention industry. Since receiving a BA in Speech Communications from OSU, she has worked for 13 years to help businesses, government agencies, schools and organizations in Marion, Yamhill, Linn and Benton Counties reduce their environmental impact. She received the Association of Oregon Recyclers' Individual Recycler of the Year Award in 2000 and has been director of the Corvallis Environmental Center's Resource Efficiency Program since 2004.

Ms. Hardison is playing a key role in the year-long Corvallis Energy Challenge as an energy auditor for Corvallis businesses. While the focus of the League's participation in the challenge has been on home energy reviews, there has also been a lot of activity directed at helping local businesses reduce their energy consumption and explore the use of renewable energy. Come and find out what Corvallis businesses are doing to meet the energy challenge!

Bring this newsletter with you for the business meeting!

*Make Dinner reservation by May 14th (form on page 2)

Board of Directors
2007—2008

President

Barbara Ross
(541)752-3605

First Vice President

Annette Mills

Second Vice President

vacant

Secretary

Pat Bishop

Treasurer

Shelly Murphy

Directors

Leah Bolger

Public Relations

Kathy Conner

Voter Service

Marilyn Koenitzer

Land Use

Louise Marquering

Bulletin Co-editor

Karen Nibler

Human Services

Tanya Shively

Immigration

Off Board

Diane Carsten

Sustainability

Laura Evenson

Events

Liz Frenkel

Land Use

Paula Krane

Bulletin Co-editor

Kate Mathews

Fund Raising

Patty McClintock

Jean Nath

Membership

Kathy Vohland

Voter Service

Doris Waring

Events

Mission

The League of Women Voters, a nonpartisan political organization, encourages the informed and active participation of citizens in government, works to increase understanding of major public policy issues and influences public policy through education and advocacy.

President's Corner

Barbara Ross



May is turning out to be a busy month, with the State LWV Council meeting here on the 17th and 18th and our Annual Meeting on the 21st. We also continue to work with the Sustainability Coalition on signing up home owners for the free home energy reviews. As many of you know, there is a contest to see which organization can recruit the most households to have the energy reviews. At this point, the LWV of Corvallis is ahead. If we win, we receive the \$1,000 prize! To our organization, that is a lot of money.

So, I urge you all to sign up your friends, neighbors and relatives. To qualify, they need to be a home owner, living in a house built before 1993. They can be customers of Pacific Power, Consumer's Power and Northwest Natural Gas. The deadline for turning in new participants is May 30th. The actual reviews are conducted by professionals from the Energy Trust of Oregon. They take about an hour and are scheduled at a time that is convenient to the home owner. If everyone pitches in to help, we can be successful. If you need more details, contact Shelly Murphy or me.

I do hope that you will make plans to attend the annual meeting. This is a great time to see old friends and to join in the pride of how much we have accomplished this year.

2008 Annual Meeting – Dinner Reservation

To reserve dinner for the Annual Meeting, please clip this form and return it with your check for \$12.00 by May 14th.

Mail to:

LWVC

PO Box 1679

Corvallis, OR 97339-1679

Menu: Grilled vegetable platters, cheese and fruit, Greek spinach pie, seasonal salad of mixed greens and house-smoked trout, bar cookies, coffee and tea

Many of the ingredients will be local and organic. If you would like to help make this a waste-free event, please bring your own table service (plate, utensils, cloth napkin, and mug).

Name: _____

_____ I plan to attend the LWV Annual Meeting, May 21st

_____ I will need a ride

_____ I can offer someone a ride

LWV of Corvallis

PO Box 1679
Corvallis OR 97339-1679
541-757-2276
www.lwv.corvallis.or.us

LWV Of Oregon

1330 12th Street SE, Suite 200
Salem OR 97302
503-581-5722
E-mail:lwvor@lwvor.org
www.lwvor.org

LWV of the United States

1730 M Street NW, Suite 1000
Washington DC 20036-4508
202-429-1965
FAX 202-429-0854
www.lwv.org

The bulletin is the newsletter of the League of Women Voters of Corvallis and is produced 10 times a year. We welcome your comments, suggestions, story ideas and submissions. Contact Paula Krane or Louise Marquering. Submissions must be received no later than the Monday after the board meeting. Members subscribe through their dues. Membership is open to anyone 18 years or older.



PENNY FOR YOUR THOUGHTS

In the early 1990s, LWV Corvallis received money from the estates of two of its active members, Kay Dick and Grace Phinney. This money was invested and has grown into a fund currently worth around \$20,000. At its April meeting, the Board had a lively discussion about using this fund in a way that would benefit the League and the community. It was decided to appoint a committee to address this issue.

The committee's charge is to come up with suggestions for projects and procedures for using these reserves and to present them to



the membership at Annual Meeting. If you have suggestions and opinions about how these funds could be used to make the League stronger, please give them to Karen Nibler. Other committee members are Louise Ferrell, Joanne Trow, Corrine Gobeli, Shelly Murphy, Liz Frenkel, and Walter Barkan.

When a process and/or project is developed, it will not be implemented without a formal vote of the membership.

A Great Way to Make Money for the League

League has an OSU THRIFT SHOP Account #1073. Call Miriam Miller, 753-7261 for more information about making donations.

Come to Council!

As you may know from previous bulleting articles, the LWV of Oregon is convening State Council in Corvallis at the Salbaugeon Suites on May 17th and 18th. What a great opportunity for us to see how the state League functions, and to network with League members throughout the state. There will be workshops, discussions and business sessions as well as time for local leagues to share what's going on in their areas.

Several social events have been planned beginning with a Friday night dine-around at some local restaurants. Come along and help us welcome our guests! Saturday morning tours include OSU's Wave Tank and a Riverwalk featuring the Farmer's Market. There will be a buffet luncheon at noon on Saturday that you are all welcome to attend. Cost is \$20.00. That evening there is a no-host social at 6:30 followed by the banquet at 7:15.

The banquet speaker will be John Kaufmann, Senior Policy Analyst for the Oregon Department of Energy. He will speak about "Peak Oil: Status and Prospects".



John will cover the local and global effects of a reduction in worldwide oil production and how to ease the transition with development of renewable energy resources. The dinner registration form was in the April bulletin.

Council will continue with more discussions and business sessions

Sunday morning with a 12:30 adjournment.

Thank you to all of the members who are volunteering to make this event a success, and we welcome any additional helpers! To register for the Council contact Barbara Ross.

See you there!

LWV Book Club



The LWVC book club will meet at the public library Wednesday, May 14th from 12 noon to 1 PM to hear Mina Carson's random review of *The Worst Hard Times* by Timothy Egan. This National Book Award winner tells the story of the dust storms during the depression and how they affected the people and the communities of the Great Plains. After the review, we'll walk over to Ruth Gallagher's to talk about the book and to suggest readings for the next reading year. Bring along at least three suggestions of books to read and discuss, beginning in October, 2008.

Energy Challenge Competition Ends May 30

Good news! The date has been extended to sign up our members, friends, and neighbors for a Home Energy Review. We now have until May 30, 2008 -- but we need to try to get people signed up as soon as possible.

As of mid-April, LWVC was in first place in terms of the number of sign-ups – over 100!! Let's try to hold that first-place status and win \$1000 for the League.

- The rules have changed slightly, so check below to see if you qualify:
- Anyone who owns a home in Benton County can sign up, even if they're a



Consumers Power customer.

- If your home was built after 1993, you can sign up and receive a Home Energy Starter Kit rather than having an energy review. The kit includes 4 free compact fluorescent bulbs, water-efficient showerheads and faucet aerators, and a list of helpful energy-saving tips.

Help the League of Women Voters of Corvallis win the prize!! To sign up for a free Home Energy Review, go to www.corvallisenergychallenge.org or contact Shelly Murphy at shellym@peak.org or 754-1184.

LWVUS Board Adopts Immigration Position

After a lengthy and comprehensive study of this complex issue, the LWVUS Board of Directors unanimously adopted the League's position on immigration which calls for a path to citizenship for current unauthorized immigrants. This 18-month study had a high level of participation – 67 percent (560 Leagues). The new position provides for federal enforcement of immigration laws and full due process rights for immigrants. State and local Leagues may oppose efforts in their communities to deport, detain or harass unauthorized immigrants who have no history of serious criminal activity. The complete position is available on the following websites - www.lwv.corvallis.or.us or www.lwv.org.

The LWVUS National Convention is coming to the Portland Hilton June 14 –17th. Be part of the excitement and come join in some of the activities either as a volunteer or observer. Detailed scheduling and reservation forms available on www.lwv.org. A special activity is described below.

LWVUS CONVENTION LOCAL FUNDRAISER & COMIC RELIEF SATURDAY NIGHT - JUNE 14, 2008

Come and see the show that has audiences across the country craving for more! **Chocolate Confessions** is the one-woman musical comedy about love, life, and chocolate. The show takes place in a chocolate shop, where a mixed assortment of hilarious customers share their deep, dark secrets through song. Over one-dozen characters are portrayed, along with uproarious vignettes, including the shocking origins of M&M candies and the amazing story of the chocolate chip cookie.

Chocolate Confessions has played to rave reviews in over 25 cities across the country.

\$30/person

Enjoy a taste of chocolate with the performance!

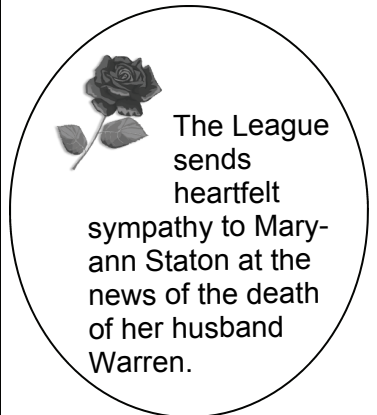
Proceeds from this fundraiser performance will raise money for voter service projects for the LWVOR Education Fund. A very good cause in this exciting election year 2008!!

Name _____ League _____

Address _____ City _____ State _____
_____ Zip _____

Phone _____ Email _____

Please send your check, payable to **LWV Portland Education Fund** to: LWV of Portland/Convention 2008, PO Box 3491, Portland, OR 97208-3491. Tickets will be held at the information desk.



Wastewater Treatment Plant

By Denise Nervik and Dave Eckert

On February 20, 2008, Dan Hanthorn, Corvallis Wastewater Operations Supervisor, provided 15 members of our League a tour of the Corvallis Wastewater Treatment Plant. Following is a synopsis of the information he provided during the tour.

HISTORY OF TREATMENT PLANT:

Prior to 1955, wastewater and storm water in Corvallis was piped directly to the Willamette River. The result was overload of pollutants and nutrients to the river, lack of oxygen in the river water and fish kills.

In 1955, the "State Sanitary Authority", predecessor of DEQ, required the building of a primary treatment plant, which used settling basins which grabbed about 50% of the pollution. The water was then treated with chlorine and sent into to the Willamette River.

In 1964, a secondary treatment plant was added that removed 85% of the pollution. Treatment involved trickling filters (2 piles of rocks with water trickled over them), and additional settling basins.

In 1978, advanced secondary treatment was added containing "activated sludge"(to settle out more particulate matter), then chlorine treatment. Sludge left over from the treatment process is pumped to a "digester."

PRESENT CONDITIONS:

The Wastewater Treatment Plant is in operation 24 hrs/day, 7 days/week and is staffed 10 hours a day. It can process up to 28,000,000 gal/day. An average day results in about 10 millions gallons/day or 4 billion gallons/year of processed wastewater. The electric bill for the wastewater plant is currently \$250,800/year.

The treatment plant is in the Willamette River floodplain at the confluence of Dixon Creek and the Willamette River. It is at risk of flooding. During such a flood, there is risk of sewage spilling directly into the river. This last occurred in 1996 when the flood waters covered the plant. Plans are in place now for dealing with such flooding.

In the original system of pipes in Corvallis, sewer and storm drain pipes are combined. One third of Corvallis, bounded by Marys River, including much of OSU as far west as 35th Street and all of downtown as far east as 1st street downtown, still has these combined pipes. They deliver all storm water to the treatment plant along with the sewage. It takes only 1/10 of an inch of rainfall to overflow the main wastewater treatment plant. When that happens, the excess combined wastewater and storm water is diverted to a second, adjacent treatment facility. Any rain storm over 1 inch may cause an overflow from the second treatment plant. That excess storm water overflow then flows into the Willamette River.

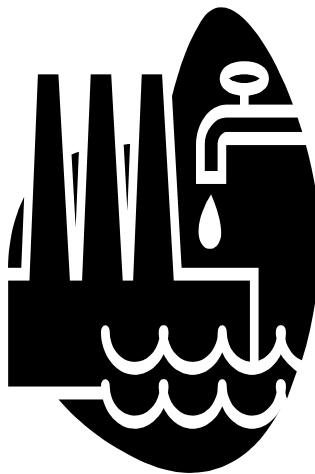
The remaining 2/3 of the City (newer sections) separates the sanitary sewers from the storm drains. In these areas, the storm water drains directly and untreated into streams. Five local streams directly receive untreated piped storm water: Oak, Sequoia, Dixon, Dunawi, and Jackson-Frazier. Water samples are collected by Public works employees and tested from these streams each month.

About 98% of waste is removed before the water enters the Willamette River. Approximately 80,000 chemicals can be in found in the pre-treated wastewater. The city monitors 155 different categories of contaminants. There is currently no testing for pharmaceuticals and hormones, which are a growing concern for both human and wildlife health.

Hewlett Packard is the largest commercial consumer of both treated water and producer of wastewater at one million gallons per day. The HP plant has its own pre-treatment facility that removes metals from the water. HP conforms to federal and state regulations and the city receives "proprietary information" from HP about what chemicals and metals they take out of the water. This information is not made public as it is a trade secret.

Allied Waste Landfill is another large commercial user of the Corvallis Wastewater treatment plant. It trucks in about 100,000 gallon of leachate water from the Coffin-Butte landfill.

(continued on next page)



The treatment system consists of trickling filters, run in series and aeration tanks. The filters use bacteria, microorganisms and macroinvertebrates to actively purify the wastewater through biological processes. They consume sewage and pollutants and chemically neutralize them organically.

The organisms settle out, along with particular matter into sludge through a mechanical process and are then sent to a large "digester." After digestion, the sludge goes to OSU lands on Soap Creek Road (1970, April). The organisms in the digester produce methane. About 16% of that methane is then used by the City for heating to reduce fossil fuel usage.

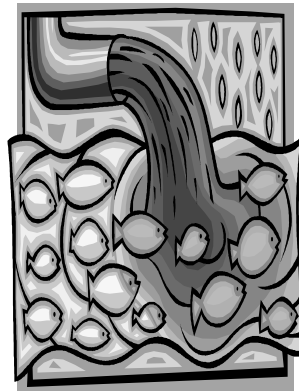
The City recently received an EPA award for its educational pretreatment program which included administering an aggressive mercury reduction program in public schools and working with dentists to remove amalgam from wastewater.

This resulted in a 90% reduction in mercury in our wastewater.

FUTURE ISSUES

The master plan for the Treatment Plant includes projects to serve a "built out" city population of 120,000.

At build-out of the city, we will



have a problem with heat of the treated wastewater or the "thermal load" as it is drained into the Willamette River. There are concerns that increased thermal load resulting from increased wastewater treatment will kill aquatic life in the Willamette River. City is considering two options in dealing with thermal load: (1) cool output to river through refrigeration (very expensive) or (2) not put any more water in the river. One consideration is to build a 20 million dollar, 16-mile pipe to the Greenberry Irrigation District south of the airport, for use on grass-seed farms. Another consideration is to reuse the treated water in Corvallis for non-potable purposes.

To compensate for the high energy costs at the plant, a generator burning methane from the digester could produce 30% of power used at the plant. A two mega-watt solar arrays producing 50% of the power needed is planned to be built over the next year.

While the City staff is doing an exemplary job managing the challenges and opportunities of the present, it was clear from the tour, that the future potential population growth and land development of Corvallis will provide extraordinary challenges for wastewater treatment to be handled in a fiscal, healthy, and environmentally-safe manner.

For further information, contact Dan Hanthorn at (541) 754-

Water Study Committee

The water study committee continues to meet. We are in the process of compiling the information gathered over the last year and identifying crucial gaps. All League members are welcome to join us. Upcoming meetings are at 10 AM, May 8th and May 22nd, at Shelly Murphy's.

Water Tip

If the snow ever stops and you feel like gardening, check out the Benton Soil and Water Conservation District's full-color, informative pamphlet: *Water Efficient Plants for the Willamette Valley*. Copies are only \$1.00 at the BSWCD office.

Buy Local Breakfasts

Delicious breakfasts of wholesome local foods.

May 3, June 7, and July 5
7:30 to 9:30 am

Corvallis Odd Fellows Hall, 223 SW 2nd

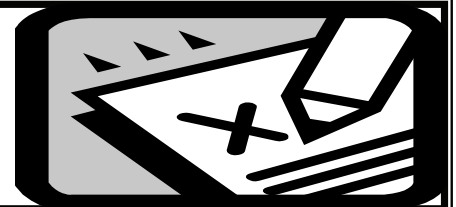
Adults \$5, Children \$3, Pick up \$2 off coupons at Robnett's Hardware or Grass Roots Books.

Music, Fun, Food !

Primary Election Ballots are Due May 20th

Ballots must be received at an official drop-off site by 8:00 PM on Tuesday, May 20th

Voter's Guide available www.lwvor.org



LWV CORVALLIS

58th Annual Meeting

May 21, 2008, 6:00 – 9:00 PM

Corvallis-Benton County Public Library Meeting Room – 645 NW Monroe Avenue

Dinner Buffet 6:00 – 7:00 PM

Business Meeting 7:00 – 7:45 PM

Featured Speaker 7:45 – 8:45 PM

Jeanette Hardison, Administrative & Marketing Director

***Get SMART!* Resource Efficiency Program, Corvallis Environmental Center**

“How Local Businesses Are Meeting the Energy Challenge”

Agenda of the Business Meeting

Barbara Ross, President

Call to Order

Welcome and Introductions

Review of the Year

Introduction of Parliamentarian

Appointment of Committee to Review Minutes

Quorum Determination

Adoption of Agenda

Presentation of the Proposed Program (see page 8 of Bulletin)

Recommendation for the 2007-2008 Program (see page 8 of Bulletin)

Presentation of the Budget (see page 9 of Bulletin)

Treasurer’s Report

Discussion and Adoption of Program

Discussion and Adoption of the Budget

Report of Nominating Committee (see page 8 of Bulletin)

Election of Board Members

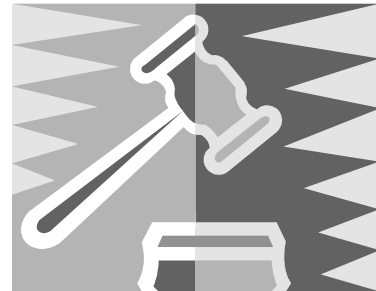
Recognition/Celebration

Directions to the Board from Members

Announcements

Speaker

Adjourn



ANNUAL MEETING RECOMMENDATIONS

PROGRAM RECOMMENDATION FOR 2008-09

The board recommends:

- Retain all current positions for action
- Update on emerging issues of state and national programs

And the following new local study

LOCAL FOOD STUDY

The goal of the Local Food Study is to formulate a position that will allow the League to promote governmental policies and programs to ensure that the food available in our area is healthy, secure, sustainable, and accessible to people of all income levels. It will also identify and/or develop materials to help educate our community regarding the source and quality of local food.

SCOPE

1. Define "local food" and determine whether or not there are benefits of a local diet.
2. Investigate where and how much (what percentage) of the food consumed in Corvallis and Benton County is produced in the Willamette Valley.
 - a. Identify existing facilities for production, processing, storage, distribution, and consumption of food in Benton County and the surrounding area.
 - b. Identify current programs that promote direct farm to consumer connections, including programs that ensure the availability of affordable, nutritious food to all members of the community.
3. Research strategies and options existing under current law that promote local/regional food production, processing, storage, distribution and consumption.
4. Assess existing government and agency policies at all levels in to identify those that promote local, healthy food and those that mitigate against this.
5. Study programs existing in other parts of the US and elsewhere that might be applicable in our area.
6. Ask League members to reach agreement on a local food position statement to use to influence government policy and to carry out community education activities.



OUTLOOK

Our local committee will initially gather information which will include the knowledge compiled by various organizations in the area that have been working on the local food issue. We will then educate our members and ask them to consider adopting a position statement. The end result will be to assist our local government in the development of a food policy and to educate the community.

REPORT OF THE NOMINATING COMMITTEE

The nominating committee, Kathy Heath, Bettie Muckelston, Karen Nibler and JoAnne Trow, offer the following candidate for the LWV of Corvallis Board for 2008-2009:

President - Annette Mills (2008-09)

1st Vice President - Kate Mathews (2008-09)

2nd Vice President – (2008-10) OPEN

Treasurer – (2008-10) OPEN

Directors –

Marilyn Koenitzer (2008-10)

Kathy Conner (2008-10)

Shelly Murphy (2008-10)

Nominating Committee: Ann Brodie, Bettie Muckelston, and Barbara Ross (2008-09)

Continuing Officers :

Secretary Pat Bishop (2007-09)

Continuing Directors:

Leah Bolger (2007-09)

Louise Marquering (2007-09)

Tanya Shively (2007-09)



BY-LAWS CHANGES

There are no By-laws changes being proposed for 2008-09.

LWV Corvallis Budget Proposal**April 1, 2008 thru March 31, 2009**

	2007-2008	Received/ Spent 07/08	2008-2009 Proposed Budget	
	Budget			Comments
RECEIPTS				
Dues	5,800.00	5,963.00	6,000.00	Anticipate election year membership increase
Member Contributions*	200.00	423.25	300.00	
Non-Member Contributions	100.00		100.00	
Grapefruit Receipts	10,000.00	10,071.00	10,000.00	
Thrift Shop, Sale of LWV Merchandise	150.00	193.16	400.00	More solicitation for donations to Thrift Shop
Money Market Interest	10.00	5.88	5.00	
Misc. (Event Receipts, Refunds, etc.)	600.00	615.00	700.00	Receipts from events & other misc.
Income from Savings/Investments	442.00	1,466.00	614.00	Anticipate lower investment returns in 2008
Total receipts	17,302.00	18,737.29	18,119.00	
DISBURSEMENTS				
P.O. Box, Permit, Voice Mail, Corp. Fee	300.00	407.69	423.00	
Website	420.00	359.40	450.00	
Officer Expenses	100.00	43.32	100.00	
Action	100.00	711.21	800.00	Anticipates election year action
Membership Expenses	150.00	130.24	150.00	
Grapefruit Expense	6,500.00	6,260.00	6,500.00	Expect increase due to transportation cost
Program PR, Committee Material, Meetings	600.00	412.59	600.00	
Events offset by receipts (in Misc.)	550.00	433.50	550.00	
Voter Education	200.00	64.05	200.00	
Bulletin Postage/Printing	1,000.00	1,114.71	1,200.00	
National Convention*	1,200.00		1,200.00	Half of National Convention Expenses
State Convention/Council	1,000.00	1,504.42	1,000.00	
Regional Meetings, Dues, Assessments	50.00	45.00	50.00	
LWVOR PMP	2,719.00	2,718.75	2,831.00	
LWVOR Education Fund PMP credits	(400.00)	(655.00)	(650.00)	EF donations cover up to 1/4 of PMP
LWVUS PMP	2,813.00	2,812.72	3,015.00	Based on current PMP**
LWVUS Education Fund PMP Credits	(200.00)	(175.00)	(300.00)	Encourage more gifts to LWVUSEF
Total disbursements	17,302.00	16,187.60	18,119.00	

*\$1200 is budgeted each year for national convention which is held every other year.

** Currently LWVC retains only 20 cents of dues paid. Budget Committee recommends a dues increase in '09-'10 if LWVUS approves a PMP increase. Submitted by Budget Committee members Kate Mathews, Chair; Walter Barkan, Annette Mills, And Barbara Ross



LWV Corvallis
P.O. Box 1679
Corvallis, Oregon 97339-1679
541-757-2276
www.lwv.corvallis.or.us

Non-profit Org
U.S. Postage
PAID
Corvallis OR
Permit #145



Dates to Remember

- May 3—Local Breakfast
- May 8—LWVC Water Study committee
- May 14—Book Club
- May 16—LWV Corvallis Board Meeting
- May 17-18—LWVOR Council
- May 20—Oregon Primary Election
- May 21—LWVC Annual Meeting
- May 22—LWVC Water Study committee
- June 7—Local Breakfast
- June 14-17—LWVUS Convention—
Portland

Join LWV Corvallis

Name _____
Address _____
City, Zip+ 4 digits _____
Phone _____
E-mail _____

- \$52 individual membership
- \$78 household membership
- \$26 student membership
- Contribution*
- I'm a new member! Please call.
- I'm renewing my membership.
- I'm interested in working with LWVC this year.
Please call.

Membership in LWV Corvallis is open to all citizens 18 years and over.

The membership year begins in October. (New members joining April-July, pay half dues.) Please make checks payable to the LWV Corvallis and mail to: LWV Corvallis, Attn: Membership, P.O. Box 1679, Corvallis, OR 97339-1679.

* Regular dues are not tax-deductible. However, contributions to the LWVOR or LWVUS Education Fund, paid with a separate check, are deductible.