



League of Women Voters of Corvallis

Serving Linn and Benton Counties

November 2007

Board of Directors
2007—2008

President

Barbara Ross
(541)752-3605

First Vice President

Annette Mills

Second Vice President

Carol McIntire

Secretary

Pat Bishop

Treasurer

Shelly Murphy

Directors

Leah Bolger

Public Relations

Kathy Conner

Voter Service

Marilyn Koenitzer

Land Use

Louise Marquering

Bulletin Co-editor

Karen Nibler

Human Services

Tanya Shively

Immigration

Off Board

Diane Carsten

Sustainability

Laura Evenson

Events

Liz Frenkel

Land Use

Paula Krane

Bulletin Co-editor

Kate Mathews

Fund Raising

Patty McClintock

Jean Nath

Membership

Kathy Vohland

Voter Service

Doris Waring

Events

Mission

The League of Women Voters, a nonpartisan political organization, encourages the informed and active participation of citizens in government, works to increase understanding of major public policy issues and influences public policy through education and advocacy.

IMMIGRATION FORUM GLOBAL TO LOCAL CONCERNS

Thursday, November 8

7:00 PM

Corvallis-Benton County Public Library



Scope of the Immigration Study

As part of the LWV national study, our local League will be considering the underlying values and principles regarding immigration, including, but not limited to:

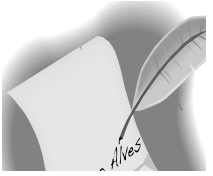
- Current federal immigration policy, such as effectiveness in uniting families; effectiveness in meeting the needs of businesses; effectiveness of enforcement; and human rights concerns.
- Reasons for migration from other countries, such as effects of global interdependence on migration; motivation of refugees and asylees; and motivation of other immigrants.
- Impact of immigration, such as economic effects of authorized and unauthorized immigration; diversity; and inclusion of immigrants in American society.

Our forum on November 8th will provide informational background on immigration issues. One topic our panelists will address is how immigration relates to "effectiveness in meeting employment needs" in Willamette Valley businesses.

Please check out the ***National Voter*** issues of February 2007, June 2007 and October 2007 for Immigration Study Briefs. More information is available on-line at www.lwv.org and the local Immigration Study Committee will have the "Every Member Information" in an upcoming bulletin.

If you have any questions, please contact Tanya Shively at stanya22@msn.com or 929-6498.

President's Corner — Barbara Ross



With the election season drawing to a close, the LVW of Corvallis can look back with pride at all we have done this fall. We had two excellent voter service forums presenting the pros and cons of measures 49, 59, and 02-64. Our speakers were articulate and well informed. We had good advanced publicity in the local paper and we gave community members a chance to become better informed about these very important issues. A super big thank you to Kathy Conner who organized these meetings and handled all the behind the scenes details so successfully.

We were also active on the advocacy front with the issues that the League had endorsed. In support of the Benton County Levy, we wrote and paid for a statement in the Voter's Pamphlet pointing out the need for additional staff for law enforcement, the DA's office and the health department. We also participated in a group that distributed 250 signs urging passage of the levy. Several League members wrote thoughtful letters to the editor which were selected for publication.

For Measure 49, the land use revi-

sion of the old measure 37, we published a series of small ads in the newspaper, and a number of us went door to door distributing supportive literature. For our September meeting, Lane Shetterly, former director of the Land Conservation and Development Commission gave a very thorough overview of M49, explaining clearly how it would provide for small development and curb large development on valuable farm and forest land.

Looking ahead, we have an important meeting on Nov. 8th to explore the many sides of the immigration issue. This is especially critical information because in January we will be grappling with consensus questions. Do put this forum on your calendar and bring a friend if you know someone who might be interested in joining the League.

If you are not already signed up for a committee, I would encourage you to find a fun place to participate. The Water, Land Use and Immigration Committees would all welcome new members. There is a place for everyone.

By the way, we need money to operate, so remember to buy your grapefruit. They are delicious.

Vote YES on 49

Measure 49 is fair and balanced. About 70% of the 7,500 claims filed under Measure 37 are directly addressed by Measure 49. Other claims for large subdivisions, commercial and industrial uses on farmland would not be allowed. These claimants could ask for 1 to 3--up to 10 home sites under Measure 49, so all legitimate claimants may receive some benefit from Measure 49. Our most valuable farm and forestland, groundwater restricted areas, and Oregon's special places, will be protected from rampant development. Don't be fooled by disingenuous ads, vote YES on 49!

LWV of Corvallis

PO Box 1679
Corvallis OR 97339-1679
541-757-2276
www.lwv.corvallis.or.us

LWV Of Oregon

1330 12th Street SE, Suite 200
Salem OR 97302
503-581-5722
E-mail:lwvor@lwvor.org
www.lwvor.org

LWV of the United States

1730 M Street NW, Suite 1000
Washington DC 20036-4508
202-429-1965
FAX 202-429-0854
www.lwv.org

The bulletin is the newsletter of the League of Women Voters of Corvallis and is produced 10 times a year. We welcome your comments, suggestions, story ideas and submissions. Contact Paula Krane or Louise Marquering. Submissions must be received no later than the Monday after the board meeting. Members subscribe through their dues. Membership is open to anyone 18 years or older.

CONGRATULATIONS TO CORVALLIS' OWN



Liz Frenkel receiving a special honor at the LWVOR Fall Workshop on October 6.

Corvallis League member Liz Frenkel was surprised with a special honor at the LWVOR fall workshop. Guest Speaker Dave Leland of the Department of Human Services (DHS) Drinking Water Program and Gail Shipley, DHS Environmental Health Director presented Liz with a framed certificate of recognition on behalf of DHS for her advocacy work on water issues during many sessions of the Oregon Legislature.

LWVOR President Marge Easley also gave Liz generous words of praise for her eleven years of dedicated service as the LWVOR Natural Resources Portfolio Chair. Although Liz has recently retired from this position, she remains a very active member of the state action committee and the LWVOR water study committee.

Announcements

The Land Use Committee will meet Thursday, November 8 at 12:30 at Louise Marquering's house, 1640 NW Woodland Drive. To propose agenda items, call or email Marilyn Koenitzer, 754-0656, marwilko@comcast.net.



SPECIAL notice if you want the LWV banner or other help with meetings please contact Laura Evenson (co-events chair) 753-6036 or evensonlahm@aol.com.



The League maintains a list serve for meeting announcements and action alerts. If you are not receiving these and wish to receive these emails please send your email address to kranep@peak.org.

CORVALLIS SELECTED FOR COMMUNITY ENERGY PILOT PROGRAM

Sustainability Coalition to Lead the Effort

Energy Trust of Oregon has selected Corvallis as the Oregon community to pilot a Community Energy Program to promote energy efficiency and renewable energy technologies. Energy Trust chose the Corvallis Sustainability Coalition, of which our League is a member, to work with them to design and implement the program. The tentative launch date is March 2008.

The purpose of the Community Energy Pilot Program is to help residential and business cus-

tomers save energy through expanded participation in existing programs, such as free energy audits and cash rebates. Corvallis will be the test case to determine whether a Community Energy Program is an effective way to promote energy efficiency and renewable energy in Oregon.

Energy Trust of Oregon, Inc., began operation in March 2002 and has helped thousands of Oregonians save money and energy through education, onsite evaluations, and fi-

nancial incentives. Energy Trust is funded by and serves customers of NW Natural, Pacific Power, Portland General Electric and Cascade Natural Gas.



League members Annette Mills and Betty Griffiths, who co-facilitate the Corvallis Sustainability Coalition, both serve on the committee that has begun planning the details of the Community Energy Pilot Program. They will keep us posted on the progress of this exciting opportunity as plans unfold.



The League welcomes new members Bill York and Nancy Demchak. Nancy is a former member of the Pennsylvania LWV. We look forward to their participation in the LWV Corvallis.

Support your local League

IT'S GRAPEFRUIT TIME AGAIN

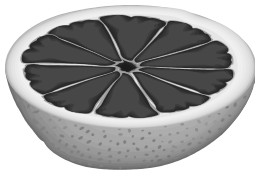
Our annual grapefruit fundraiser will be from October 6 to November 19. Funds raised are used to support our local programs. Very little of the money is returned from National LWV.

PRICES THIS YEAR: \$18 WHOLE BOX

\$10 HALF BOX

Order early (and often!) with the form below. The fruit will be delivered in early December. If you do not order grapefruit, please consider a donation.

We make about 40% of the cost of a box.



Order Form

NAME: _____

ADDRESS: _____

TELEPHONE: _____

No. of boxes Amount
_____ Full Box(es) @\$18 each _____

_____ Half Box @\$10 each _____

Total _____

Send to: Kate Mathews

3336 SW Willamette

Corvallis 97333

Make checks payable to: LWV Corvallis

Questions: Kate at 754-1172

Water Resources – Update

The Water Resources study committee continues to meet regularly. Recent topics have included the city of Corvallis' Storm Water Master Plan, urban streams, water outflows into the Willamette, differences between water issues in the city and county, water stewardship, actions during the last legislative session and upcoming issues, and the droughts in China and Georgia. We've been introduced to acronyms such as NPDES and SWCD.

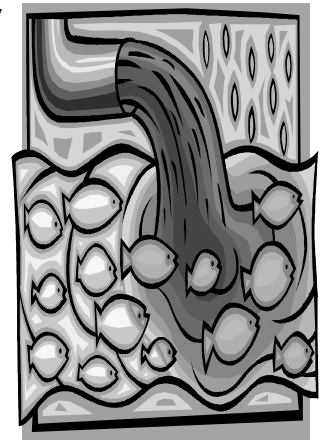
November meetings are as follows:

November 1st, 2p.m., Shelly Murphy's;

November 15th, 10 a.m. Liz Frenkel's;

November 29th, 12 noon, Liz Frenkel's.

League members are invited to attend. Call Corrine Gobeli, 745-7736 (cgobeli@aol.com) for more information.



What You Can Do

Starting with this issue, the bulletin will include a monthly "tip" about what each of us can do to help conserve and protect our water resources.

Problem: Fats, oils, and grease that are washed down the drain stick to the insides of sewer pipes. Over time, they can build up and block the entire pipe. (Note: Garbage disposals do not keep grease out of the plumbing system.)

Solution: Help prevent sewer overflows in your home, your neighbor's home or public areas.

- Never pour grease down sink drains or into toilets.
- Put strainers in sink drains to catch food scraps and other solids.
- Scrape grease and food scraps into a can or empty milk carton or trash for disposal.

Source: City of Corvallis, Public Works Department (541-766-6916)

Recycling Hint

Several LWV members were active in getting Corvallis Disposal to start recycling in Corvallis way back in 1981. Now Corvallis Disposal is owned by Allied Waste and the program is changing.

Twenty-six years ago most of our containers were metal and glass. Now they are almost all plastic. The recycling market is constantly changing and everyone has questions. I will try to provide a recycling tip each month. If you have questions or ideas, please, e-mail Louise Marquering (corvallismatters@aol.com) or call 753-0012. I will try to find the answer.

The good news is, the new tan containers that Allied Waste is providing are made from recycled materials.

- Milk and juice cartons and jugs can be recycled, but the plastic lids on the milk and juice jugs cannot. Plastic lids on all bottles go into the garbage. They cannot be recycled at all.

- Allied Waste can now accept any box from the refrigerator or freezer if the food inside does not directly touch the paper.

- Ice cream cartons and frozen juice containers cannot be recycled, but the metal lids on the juice containers can be recycled.



Ballots are Due November 6!

Ballots must be received at an official drop-off site
by 8:00 PM on Tuesday, November 6

LWV Book Group — Another Year of Good Books

The LWV Book Club plans another year of stimulating reading. Selections include fiction, nonfiction, and a video; local authors, favorite authors, new authors. Meetings of the book club are scheduled for 3 PM, the 2nd Monday of the month. Upcoming locations will be announced in this Bulletin. As always, discussions are open to all League members.

To get a head start on reading, check out the year's list:

On Monday, November 12th, we'll meet at the Old World Deli, 3 PM to discuss Ivan Doig's recent book, *The Whistling Season*. Reviewers commend this book for its strong characters, graceful, powerful language, and clear depiction of both place and time. Questions – contact Corrine Gobeli, 745-7736, cgobeli@aol.com.

Monday, December 10, video: *The Russians are Coming, the Russians are Coming*.

Monday, January 14, *Shadow Divers: The True Adventure of Two Americans who Risked Everything to Solve One of the Last Mysteries of World War II*, by Robert Kurson (4.5 stars: Amazon).

Monday, February 11, *Death Pans Out* by Ashna Graves (Wendy Madar) (4.5 stars: Amazon). Author talk: February 21, 7 PM. Library Main meeting room – Sponsored by Friends of the Library.

Monday, March 10, *An Empire Wilderness: Travels into America's Future* by Robert D. Kaplan.

Monday, April 14, *Tender is the Night*, F. Scott Fitzgerald (4 stars, Amazon).

Monday, May 12, *The Worst Hard Time*, Timothy Egan (4.5 stars, Amazon). (Random Review: May 14, 12 noon, Library).





LWV Corvallis
 P.O. Box 1679
 Corvallis, Oregon 97339-1679
541-757-2276
 www.lwv.corvallis.or.us

Non-profit Org
 U.S. Postage
 PAID
 Corvallis OR
 Permit #145



Dates to Remember

- November 1—Water Committee
- November 6 - Election day**
- November 8—Immigration Forum
- November 8—Land Use Committee
- November 12—Book Group
- November 15—Water Committee
- November 16 - Board Meeting
- November 19 - Deadline for Grapefruit Orders**
- November 29—Water Committee
- December 10—Book Group
- December 11—Program Planning

Join LWV Corvallis

Name _____
 Address _____
 City, Zip+ 4 digits _____
 Phone _____
 E-mail _____

- ___ \$52 individual membership
- ___ \$78 household membership
- ___ \$26 student membership
- ___ Contribution*
- ___ I'm a new member! Please call.
- ___ I'm renewing my membership.
- ___ I'm interested in working with LWV this year.
 Please call.



Membership in LWV Corvallis is open to all citizens 18 years and over.

The membership year begins in October. Please make checks payable to the LWV Corvallis and mail to: LWV Corvallis, Attn: Membership, P.O. Box 1679, Corvallis, OR 97339-1679.

* Regular dues are not tax-deductible. However, contributions to the LWVOR or LWVUS Education Fund, paid with a separate check, are deductible.. (LWVUS ED Fund contributions are preferred at this time.)