



**Board of Directors  
2007—2008**

**President**

Barbara Ross  
(541)752-3605

**First Vice President**

Annette Mills

**Second Vice President**

Carol McIntire

**Secretary**

Pat Bishop

**Treasurer**

Shelly Murphy

**Directors**

- Leah Bolger  
Public Relations
- Kathy Conner  
Voter Service
- Marilyn Koenitzer  
Land Use
- Louise Marquering  
Co-bulletin Editor
- Karen Nibler  
Human Services
- Tanya Shively  
Immigration

**Off Board**

- Diane Carsten  
CSC
- Liz Frenkel  
Land Use
- Paula Krane  
Co-bulletin Editor
- Kate Mathews  
Fund Raising
- Patty McClintock  
Co-membership
- Jean Nath  
Co-membership
- Kathy Vohland  
Voter Services
- Doris Waring  
Events

**Dates to Remember**

**September 22-23**

Fall Festival Voter Registration

**September 25**

LWV Corvallis Kick-off Meeting—BM 49 discussion

**October 6**

LWVOR Fall Workshop

**November 6**

Election Day

# League of Women Voters of Corvallis

Serving Linn and Benton Counties

Summer 2007

## Campaign for Yes on Ballot Measure 49

The League of Women Voters of Oregon has formally endorsed Ballot Measure 49 which will be on the November 6 Special Election ballot.

Ballot Measure 49 is the legislative answer to the massive problems created by Measure 37, passed by the voters in 2004. The 2007 legislature chose to refer this statutory (not constitutional) measure to the voters as Ballot Measure 49. **BM 49 is not a repeal of Measure 37. It modifies Measure 37.** Without BM 49, Measure 37, the current law, will remain unchanged. BM 49 modifies Measure 37 in a number of ways:

- Limits M-37 claims to residential claims (no more commercial or industrial claims);
- Clarifies that Measure 37 claimants can build homes on their property if that was allowed when they purchased the property and limits the number of homes to three;
- Allows up to 10 houses if the Measure 37 claimants can prove financial loss;
- Clarifies that the right to build a house is transferable to a surviving spouse and to new owners; and

- Does not allow more than three homes on high value farm or forest land or in groundwater limited areas.

Ballot Measure 49 will give some certainty to neighbors that they will not be surprised by a new aggregate pit, new subdivision, or a “Big Box” store in their neighborhood.

Benton County, the only county in the state to do so, opposed Measure 37 in 2004. Our voices are needed now to **support Ballot**

**Measure 49** which will rein in the massive damage that Measure 37 is causing in our state.

The statewide Campaign for **Yes on Measure 49** ([www.yeson49.com](http://www.yeson49.com)) has just hired a field coordinator, Cameron Mulder, for Benton and Linn Counties. Cameron, an OSU graduate, is looking for inexpensive, centrally-located office space and for lots of help. Give Cameron a call (541-

908-2777) or contact Leaguers Peggy Lynch or Liz Frenkel.

Please respond to calls for help as generously as you can **AND** come to the Fall Kick-off meeting to learn more about BM 49. Details will be in the September newsletter.



## Choose a Topic – and Join a Study Committee!

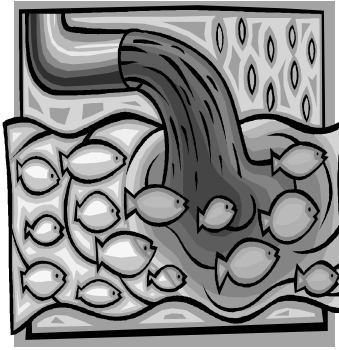
The League is well known for its thorough and thoughtful studies on timely topics. This year, members of the LWV of Corvallis are studying a particularly diverse array of subjects. Take advantage of this great opportunity to get involved in the topic of your choice:

**Immigration** – Our Immigration Study Committee, chaired by Tanya Shively, will

be organizing an educational forum in November on the impact that immigrants – both documented and undocumented – have on Benton and Linn Counties. This will be followed in January with consensus meetings, winding up the two-year national League study on this vital issue. To join this active committee, contact Tanya at [stanya22@msn.com](mailto:stanya22@msn.com) or 929-6498. (cont.)

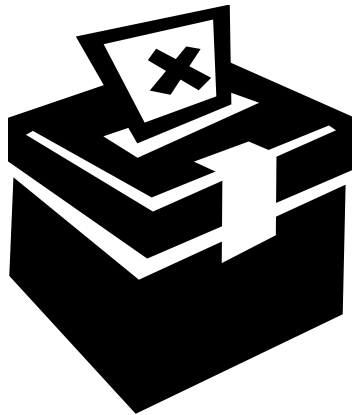
### Water Resources –

At the state convention in May, League delegates adopted a 30-month study on water resources in Oregon – where they are and how they are used. The study is to reflect the interrelationship between quantity and quality, with particular consideration of the relationship between water and land use planning. Our local League's Water Resources Study Committee, co-chaired by Liz Frenkel and Corrine Gobeli, will focus on local water resources. To join this newly-formed study committee, contact Corrine at [cgobeli@aol.com](mailto:cgobeli@aol.com) or 745-7736.



### Election Methods –

Delegates at state convention also adopted an 18-month study on election methods. This study will cover such topics as fusion voting, partisan vs. nonpartisan elections, and top two open primary elections. Paula Krane will be representing our League on the state committee and will serve as a resource for our local study group. If you would like to serve on this committee (which is still in need of a chair), contact Annette Mills at [amills@virginiavillageproductions.com](mailto:amills@virginiavillageproductions.com) or 571-451-5867.



@virginiavillageproductions.com or 571-451-5867.

### Thank you!

Thanks to those who brought food for Saturday morning town halls. Special thanks to Kate Mathews and Shelly Murphy who hosted town halls when I was out of town. Thanks to members for assistance with chairs and details for the town halls and forums at the library meeting room during the 2006-2007 LWV year.

Corvallis-Benton County Public library co-hosted our forums and town halls. The use of the main meeting room, publicity, and staff support was invaluable. The Caring Place and US Bank, 9th and Walnut, let us use their meeting rooms for units. Thanks to these places, we had access to free spaces for education and discussion.

Doris Waring, Events Chair



# Welcome!

We are pleased to welcome new members Eleen Baumann, Katherine Cleland, Patricia and Kent Daniels, Dagmar Johnson and David Eckert. Dagmar, Patricia and Kent are returning to League and David is the husband of Annette Mills, our 1st Vice-president. We are looking forward to the participation of these new members. Thanks to you all for joining us!  
Jean Nath, Member Services.

## Community Film and Discussion Series

### Saving Energy and Money

Check out "Energy Trust of Oregon" on the web for a wealth of ideas – tells who they are, how they came to be, how to get cash incentives as well as tax credits for saving energy. These are useful ideas if you are buying new appliance, remodeling or retrofitting your home, or thinking of moving. Energy Trust also offers a free work sheet for a home energy analysis that will only take 20-30 minutes of your time.

Web address: [www.energytrust.org/residential/hes/index.html](http://www.energytrust.org/residential/hes/index.html).

LWV of Corvallis will sponsor a Community Film and Discussion Series on a trial basis beginning this fall. The idea for the proposal stemmed from a recent film & discussion series on non-violence presented by the local chapter of Veterans for Peace. A short film was shown, followed by a facilitated discussion. This series was very well received, and an average of 25 people participated in thoughtful and lively discourse following each of the seven films that were shown over a course of 4 weeks.

It is intended that a member of the League would play the moderator role in a similar event. The moderator would call on people to speak, ensure no one monopolized the conversation and that everyone was heard, and perhaps pose questions to promote discussion. The designated moderator would remain neutral.

If you would like to suggest a short film (60 minutes or less), a topic, or you are interested in helping with this project, please contact Leah Bolger, [leahbolger@comcast.net](mailto:leahbolger@comcast.net), or 207-7761.



LWV Corvallis  
P.O. Box 1679  
Corvallis, Oregon 97339-1679  
**NEW PHONE NUMBER**  
**541-757-2276**  
www.lwv.corvallis.or.us

Non-profit Org  
U.S. Postage  
PAID  
Corvallis, OR  
Permit # 145

### Join LWV Corvallis

Name \_\_\_\_\_

Address \_\_\_\_\_

City, Zip+ 4 digits \_\_\_\_\_

Phone \_\_\_\_\_

E-mail \_\_\_\_\_

\$50 individual membership

\$75 household membership

\$25 student membership

Contribution\*

I'm a new member! Please call.

I'm renewing my membership.

I'm interested in working with LWVC this year.

Please call.

Membership in LWV Corvallis is open to all citizens 18 years and over.

The membership year begins in October. Please make checks payable to the LWV Corvallis and mail to: LWV Corvallis, Attn: Membership, P.O. Box 1679, Corvallis, OR 97339-1679.

\* Regular dues are not tax-deductible. However, contributions to the LWVOR or LWVUS Education Fund, paid with a separate check, are deductible.